



SPECIFICATIONS

- Electrical Rating : 5A 250VAC
- Mechanical life: Over 100000 cycles
- Electrical life: Over 50000 cycles
- Contact resistance: <50mΩ
- Insulation resistance: >1000MΩ
- High voltage resistance: >2000VAC 1 min.
- Ambient temperature: -20~55°C
- IP Degree: IP65
- Torque: 5~14Nm
- Operation Pressure: About 4N
- LED Life: over 50000 hours

MATERIALS

- Body/Button: Stainless Steel
- Base: PA
- Contact: Silver alloy

HOW TO ORDER

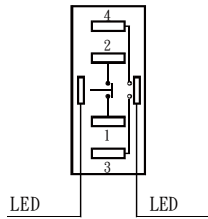
HBGQF	22	11	D	□	J	R	24V	S
Series	Switch Diameter	Contact Configuration	LED Type	Function	Terminal Type	LED Color	LED Voltage	Shell Material
	22 22mm 25 25mm	11 1NO1NC 22 2NO2NC (for GQ25 only)	D Dot E Ring	□ Momentary Z Latching (□ : no letter)	J:Pin Terminal	R Red G Green Y Yellow O Orange B Blue W White	6V 12V 24V 36V 110V 220V	S:Stainless Steel



Switch Configuration

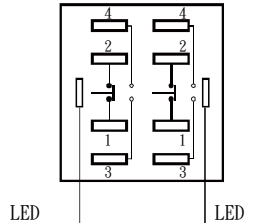
Terminal Description

HBGQF22



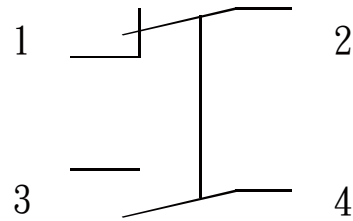
T1,T2 : NC T3,T4 : NO

HBGQF25



T1,T2 : NC T3,T4 : NO

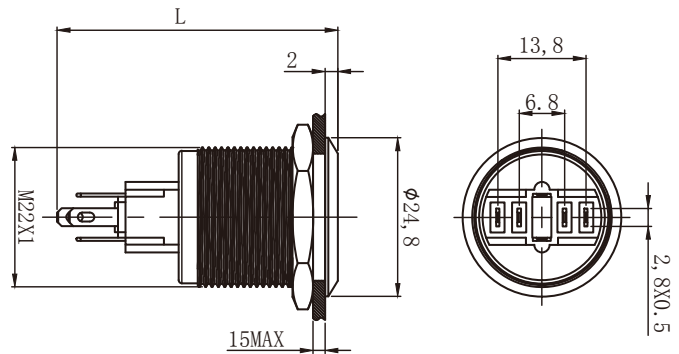
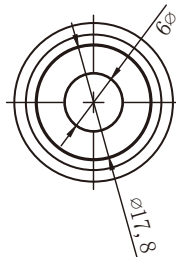
Switching Operation



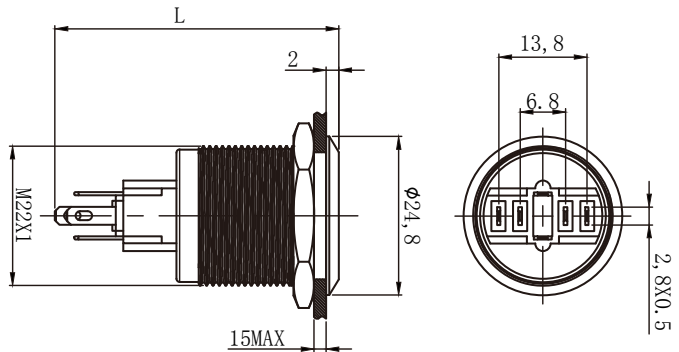
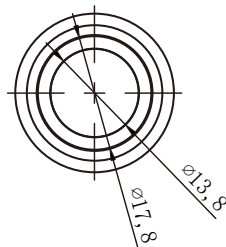
Dimension of HBGQF22 series



L: Momentary 38.5mm
Latching 43.9mm



L: Momentary 38.5mm
Latching 44.4mm

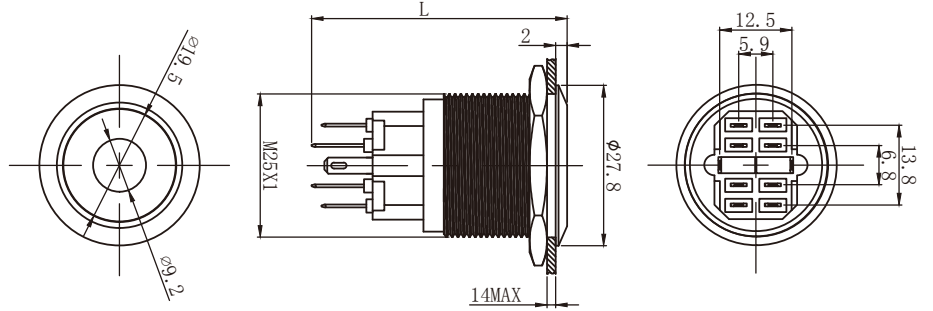




Dimension of HBGQF25 series



L: Momentary 41.5mm
Latching 44.3mm



L: Momentary 14.5mm
Latching 44.3mm

