

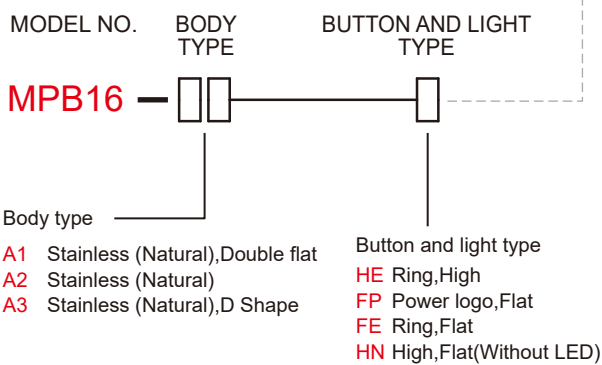
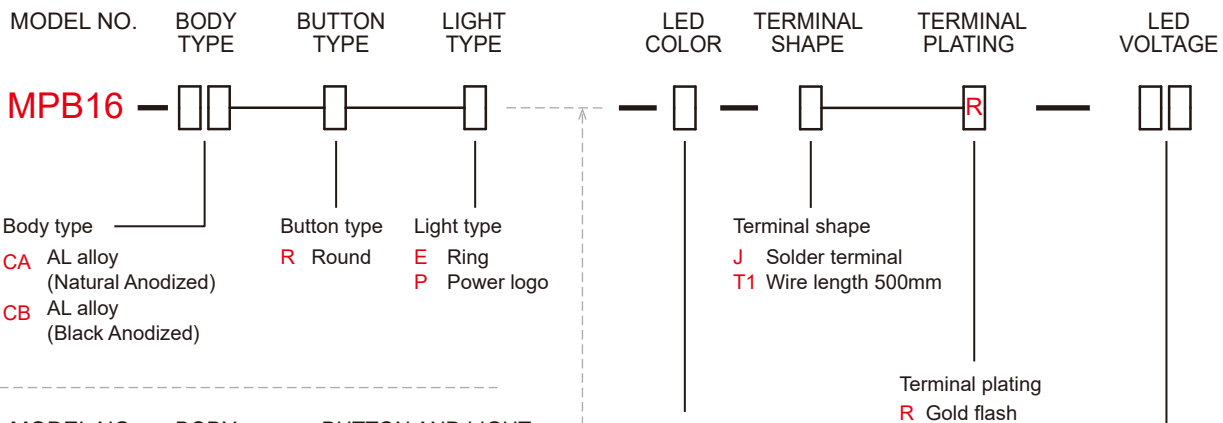

**SPECIFICATIONS**

**RATING** : Max : 2A / 36VDC ; Min : 0.5A / 12VDC.  
**ELECTRICAL LIFE** : 200,000 make-and-break cycles at full load  
**MECHANICAL LIFE** : 1,000,000 cycles  
**INSULATION RESISTANCE** : 1,000 MΩ min. at 500VDC  
**DIELECTRIC STRENGTH** : 2,000V RMS @ sea level  
**CONTACT RESISTANCE** : 50 mΩ max.  
**OPERATION TEMPERATURE** : -20°C~+70°C  
**TRAVEL**: About 2.0±0.20mm  
**OPERATION PRESSURE** : 4.5N±1.5N  
**INGRESS PROTECTION** : IP67  
**TORQUE** : 11.5 kgf · cm  
**THICKNESS** : 8.0mm (Max.)  
**Current limiting resistor is required to limit LED forward current to 20mA.**

**MATERIALS**

**BUSHING** : Aluminum alloy / Stainless Steel  
**BASE** : PBT (UL 94-V0)  
**ACTUATOR** : PC (Translucent UL 94-V2)  
**CAP** :Aluminum alloy / Stainless Steel  
**SPRING** : Steel.  
**SEALING** : Silicone (Translucent).  
**O-Ring** : Silicone (Translucent).  
**TERMINAL** : Brass ,Gold flash plated.  
**CONTACT** : Silver alloy.  
**HEX NUT** : Brass (Nickel plated).

**HOW TO ORDER**

 IP 67  
ACCORDING TO  
EN 60529:1989 IEC 60529:2001  
IEC 60529:2001


LED color

ITEM NO	COLOR
0	Without LED
1	White
3	Red
4	Orange
5	Yellow
6	Green
7	Blue
<b>DUAL COLOR LED</b>	
A	Red&Green
<b>RGB COLOR LED</b>	
RGB	Red/Green/Blue

Accessories

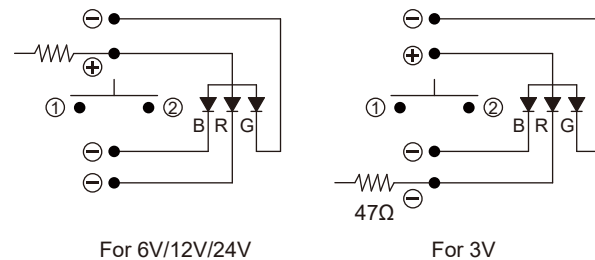
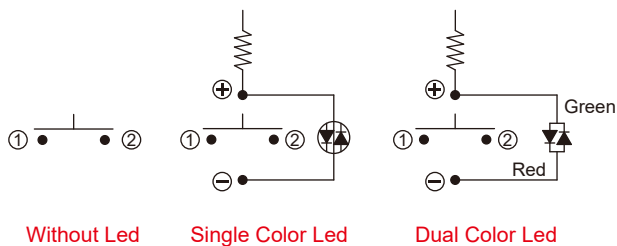
Resistance (About LED Voltage)	
0V	Without Resistance
3V	LED input 3 VDC, 47Ω * Red/Yellow/Orange LED type only
6V	LED input 6 VDC, 180Ω
12V	LED input 12 VDC, 470Ω
24V	LED input 24 VDC, 1000Ω

※ ohms value of resistance tolerance: ±5%

EXAMPLE:  
 MPB16-CARE-0-JR-0 (Without LED)  
 MPB16-CARE- [ ] -JR- [ ] V  
                   LED color LED voltage

**CIRCUIT**

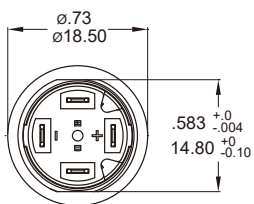
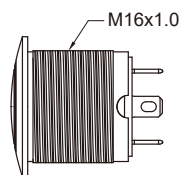
※ According to the input voltage adjustment resistance



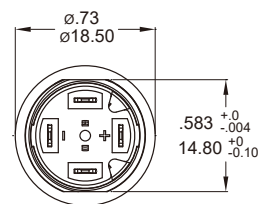
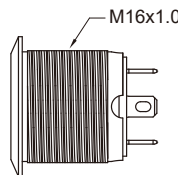
RGB Color Led

**BODY TYPE**

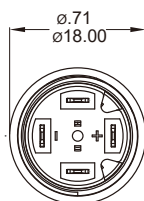
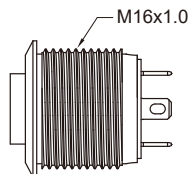
CA/CB Aluminum alloy



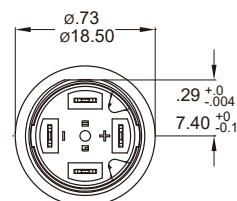
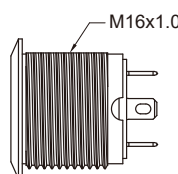
A1 Stainless Steel



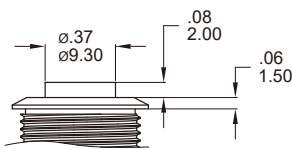
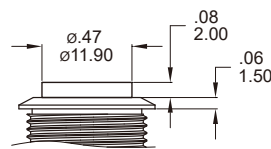
A2 Stainless Steel



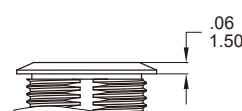
A3 Stainless Steel (D Shape)


**BUTTON TYPE**

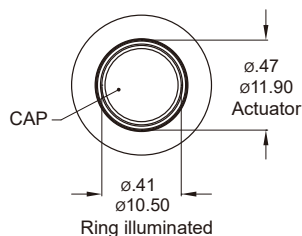
R Round


 H High, Flat  
Ring illuminated

 H High, Flat  
Without LED


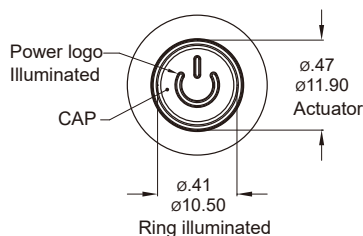
F Flat


**LIGHT TYPE**

E Ring, Round



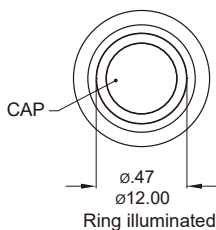
P Power logo, Round



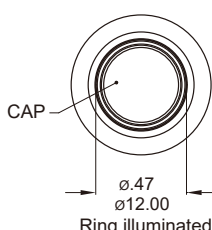
\* E,P light type only for CA,CB body.

\* HE,FE,FP light type only for A1,A2,A3 body.

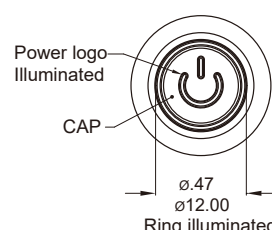
HE Ring, High



FE Ring, Flat

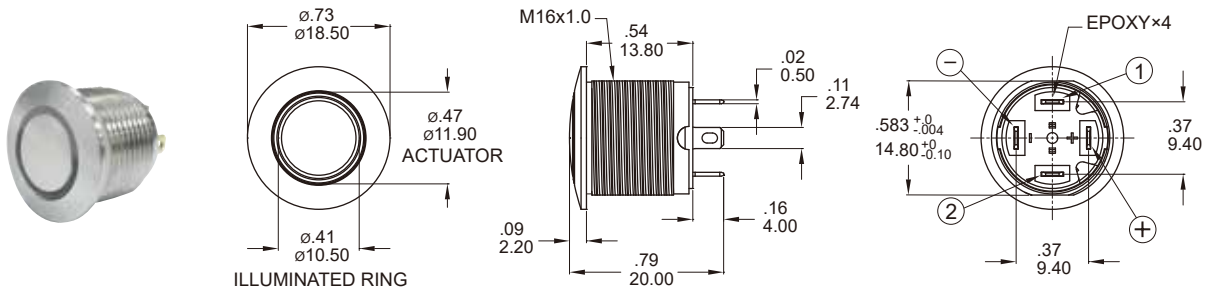


FP Power logo, Flat



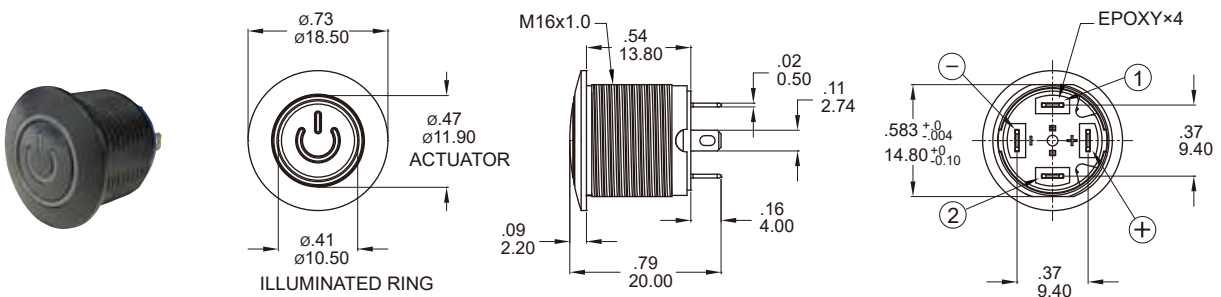
**DIMENSION**

**E Ring**



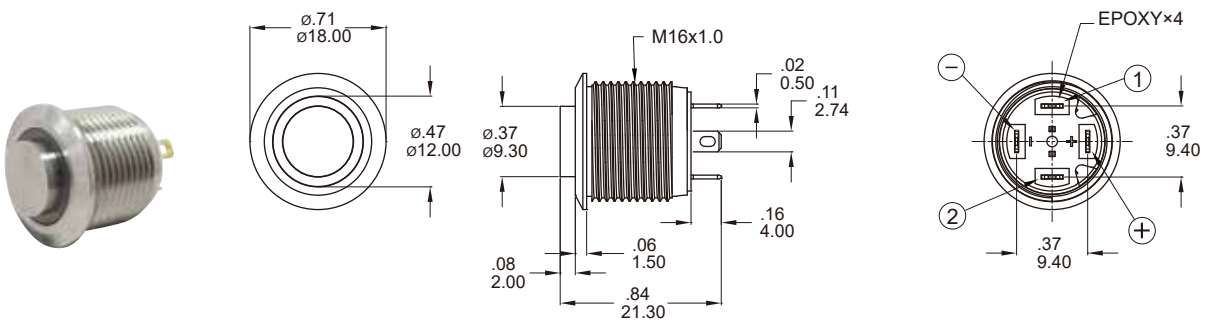
Part No. Shown : MPB16-CARE-□-JR-0V

**P Power logo**



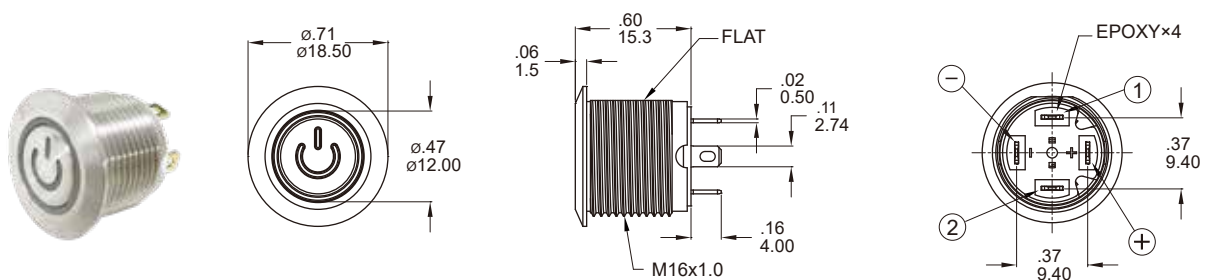
Part No. Shown : MPB16-CBRP-□-JR-0V

**HE Ring**

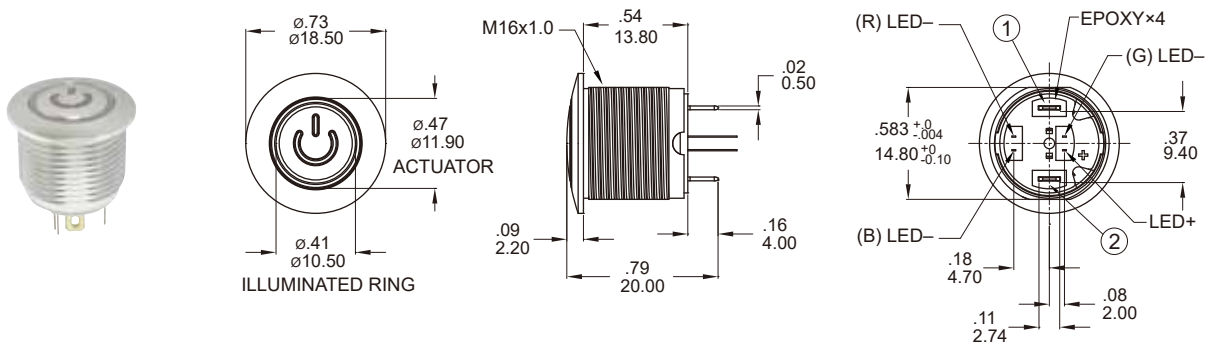


Part No. Shown : MPB16-A2HE-□-JR-0V

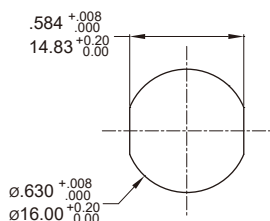
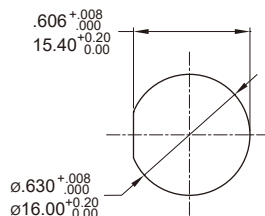
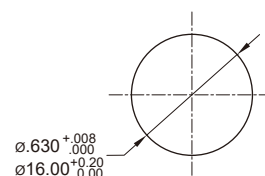
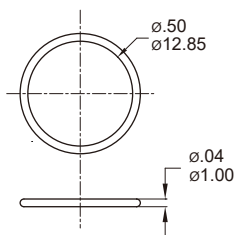
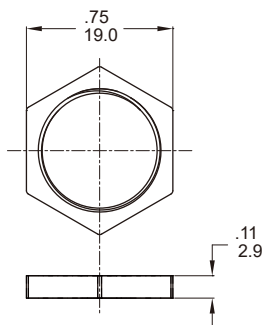
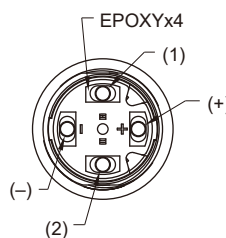
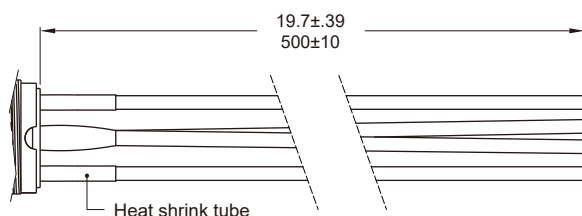
**FP Power logo**



Part No. Shown : MPB16-A3FP-□-JR-0V

**DIMENSION**
**P** Power logo


Part No. Shown : MPB16-CARP-RGB-JR-0V

**PANEL CUTOUT / HARDWARE**
**PANEL CUTOUT**
**CA/CB/A1 Type**

**A3 Type**

**A2 Type**

**HARDWARE**
**O-RING**

**M16 NUT**

**T1** ※ Wire=Multi-wire lead AWG20, section 0.6mm<sup>2</sup>, UL approved

**Non-LED**

DESCRIPTION	WIRE COLOR
TERMINAL 1	BLACK
TERMINAL 2	BLACK

**With LED**

DESCRIPTION	WIRE COLOR
TERMINAL 1	BLACK
TERMINAL 2	BLACK
LED+	RED
LED-	GREEN

