

SPECIFICATIONS

RATING: 1A 250VAC, 3A 120VAC or 28VDC

ELECTRICAL LIFE: 6,000 cycles.

CONTACT RESISTANCE: R=20 mΩ max. ,Q=50 mΩ max.

INSULATION RESISTANCE: 1,000 MΩ min., 1000VDC

DIELECTRIC STRENGTH: 1,000 VAC for 1 Minute.

OPERATING TEMPERATURE: -40°C to 85°C.

FULL TRAVEL: 1.88±0.30mm

OPERATING TRAVEL: 1.34±0.25mm

OPERATING FORCE: 350±100g

MATERIALS

CASE: Diallyl phthalate(DAP) (UL94V-0).

PLUNGER: Nylon glass fiber.

BUSHING: Brass,nickel plated.

HOUSING: Stainless.

SWITCH SUPPORT: Brass.tin plated.

CONTACT/TERMINAL:Brass, with silver or gold plated. (See Page 120)



HOW TO ORDER

MODEL NO. ACTUATOR BUSHING TERMINATIONS TERMINAL SEAL RoHS ADDITIONAL CAPS CAP



Model NO.
8MSL ON-ON

Actuator
P1 4.29 high

Bushing
B05 5.24 high,flat (thd)
B06 5.24 high,flat (non-thd)

Seal
E EPOXY (std)
N NO EPOXY

RoHS soldering
S RoHS & Lead Free

Caps
(See Page 119)
C1
C3
C4

Terminal plating
Q Silver
R Gold
C Gold over silver

Additional hardware
0 Without
5 Additional hardware

Terminations

- M1 Solder Lug
- M2 PC thru-hole
- M5 Wire wrap
- M6 Right angle, PC thru-hole
- M7 Vertical right angle, PC thru-hole
- VS2 8.94 high, V-bracket

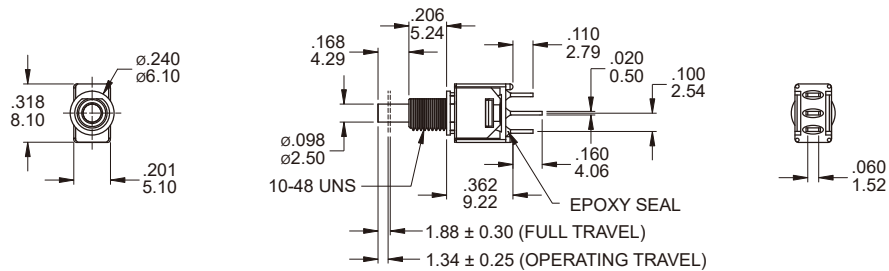
CAP Color

ITEM NO	COLOR
1	White
2	Black (Std)
3	Red
4	Orange
5	Yellow
6	Green
7	Blue
8	Brown
9	Gray

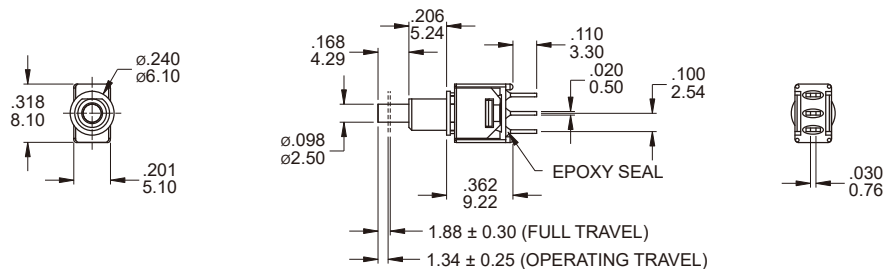
* Besides standard color, other colors need to check stocks available.

SWITCH FUNCTION

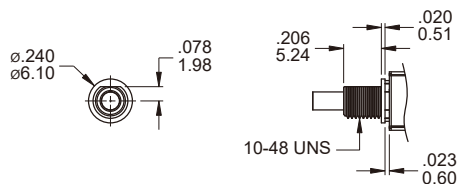
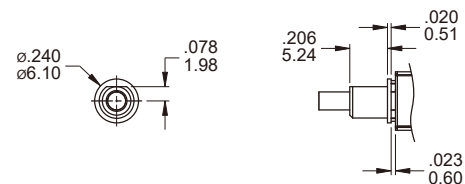
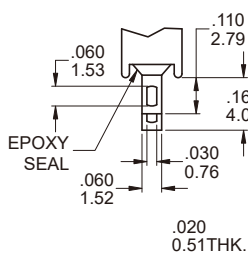
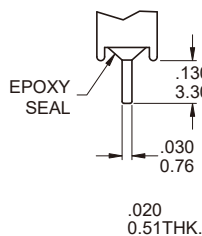
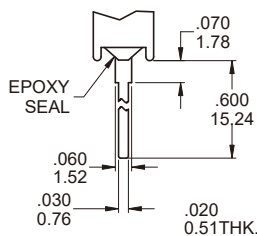
NO. POLES	UL/CSA MODEL NO.	MODEL NO.	SWITCH FUNCTION		CONNECTED TERMINALS / SCHEMATIC			
			POS.1	POS.2	POS.1		POS.2	
SP	Q28	8MSL	ON	ON	2-1		2-3	

POLE OPTIONS
M1

SPDT

Part No. Shown : 8MSLP1B05M1QE

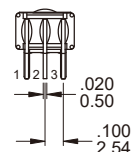
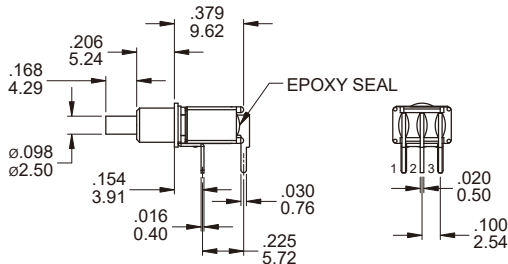
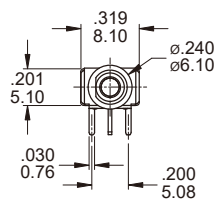
M2

SPDT

Part No. Shown : 8MSLP1B06M2QE

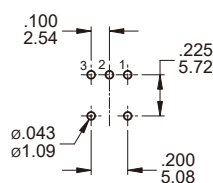
BUSHING AND TERMINATION OPTIONS
B05 THD

B06 NON-THD

M1 Solder lug

M2 PC Thru-hole

M5 Wire Wrap

OTHER TERMINATION OPTIONS

- M6** Right angle P.C. Mount
- M7** Right angle P.C. Mount
- VS2** Vertical bracket P.C. Mount

M6



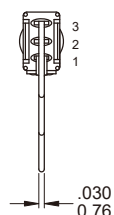
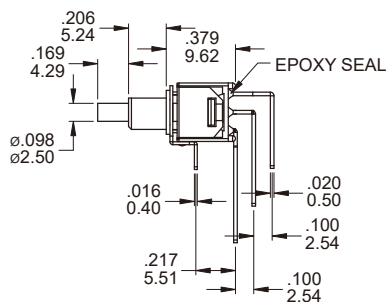
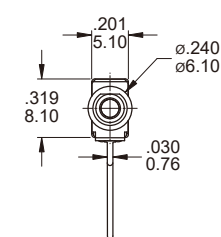
P.C. MOUNTING



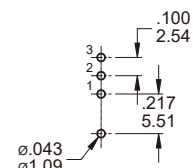
SPDT

Part No. Shown : 8MSLP1B06M6QE

M7



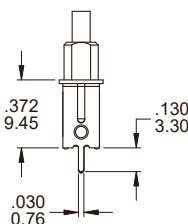
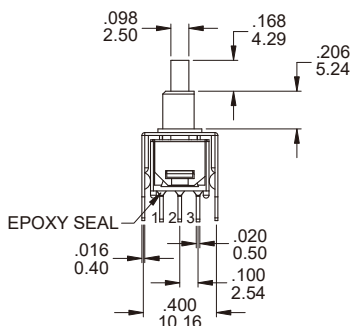
P.C. MOUNTING



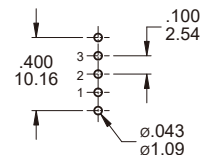
SPDT

Part No. Shown : 8MSLP1B06M7QE

VS2



P.C. MOUNTING

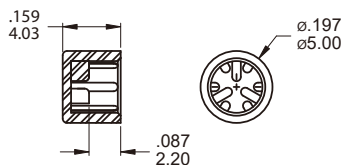


SPDT

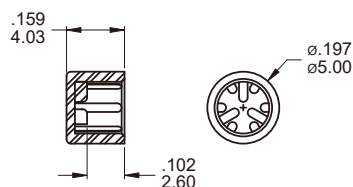
Part No. Shown : 8MSLP1B06VS2QE

CAP OPTIONS

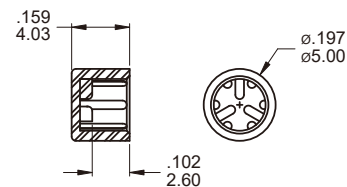
C1 For 8M Series ONLY



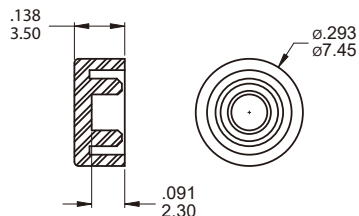
C2 For 8A,8B Series ONLY



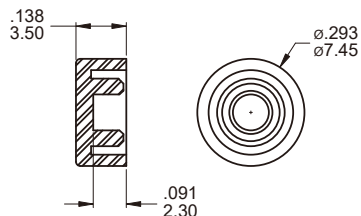
C3 For 8M Series B8,B9 Bushing ONLY



C4 For 8M Series ONLY



C5 For 8A,8B Series ONLY



Cap Standard Color : White, Black, Red, Green

CONTACT MATERIAL OPTIONS

	CONTACT PLATING	TERMINAL PLATING	RATINGS
Q	Silver	Silver	3 Amps with resistant load @ 120VAC or 28VDC
C	Gold over Silver	Gold over silver	1 Amps with resistant load @ 250VAC
R	Gold	Gold	0.4 Volt - Amps (VA) max. @ 20V max. (AC or DC)

SOLDERING PROCESSES

MANUAL SOLDERING: Use soldering iron of 30 watts, controlled at 350°C
approximately 5 seconds while applying solder.

WAVE SOLDERING: Recommended Soldering Temperature: 270 ± 5°C
Duration of Solder Immersion: Max 5 sec. (PCB is 1.6mm in thickness)

Part No. Shown : 8MD9P1B10M2RE