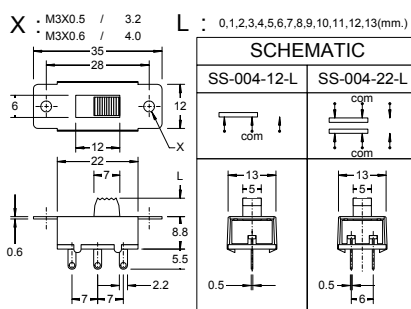
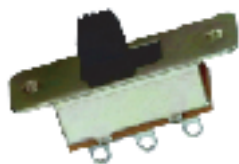


Slide Switch SS Series

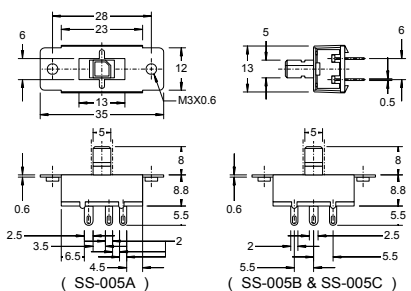
SS-004-12.SS-004-22



SPECIFICATION

- Circuit : ON-ON
- Rating : A.C. 125V 6A
- Contact R.[max] : D.C. 5V 1A 30m
- Insulation R.[min]: D.C. 500V 100M
- Withstand VOL. : A.C. 500V 1minute
- Operating force : 400 200g
- Life cycle[max] : 10,000 CYCLES

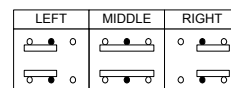
SS-005



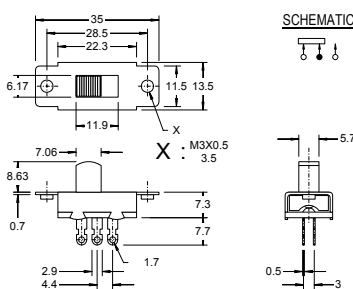
SPECIFICATION

- Rating : A.C. 125V 6A
- Operating force : 400 200g
- Life cycle[max] : 10,000 CYCLES

Circuit A :2P3T (OFF - ON - ON)
B :2P3T (ON - OFF - ON)
C :2P3T



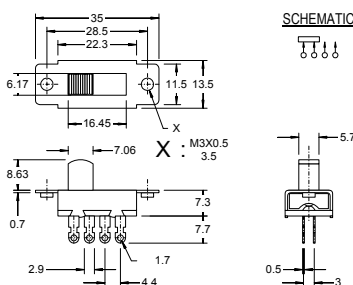
SS-006-012B



SPECIFICATION

- Circuit : ON-ON(1P2T)
- Rating : A.C. 125V 10A
- Contact R.[max] : D.C. 5V 1A 30m
- Insulation R.[min]: D.C. 500V 100M
- Withstand VOL. : A.C. 1,000V 1minute
- Operating force : 650 200g
- Life cycle[max] : 10,000 CYCLES

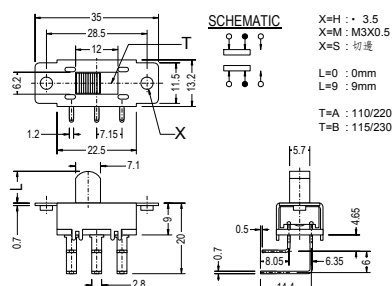
SS-006-013B



SPECIFICATION

- Circuit : ON-ON-ON(1P3T)
- Rating : A.C. 125V 10A
- Contact R.[max] : D.C. 5V 1A 30m
- Insulation R.[min]: D.C. 500V 100M
- Withstand VOL. : A.C. 1,000V 1minute
- Operating force : 650 200g
- Life cycle[max] : 10,000 CYCLES

SS-007-012F.SS-007-022F



SPECIFICATION

- Circuit : ON-ON(1P2T)(2P2T)
- Rating : A.C. 125V 6A
- Contact R.[max] : D.C. 5V 1A 30m
- Insulation R.[min]: D.C. 500V 100M
- Withstand VOL. : A.C. 1,000V 1minute
- Operating force : 500 200g
- Life cycle[max] : 10,000 CYCLES