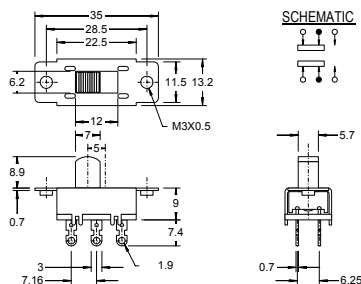


Slide Switch SS Series

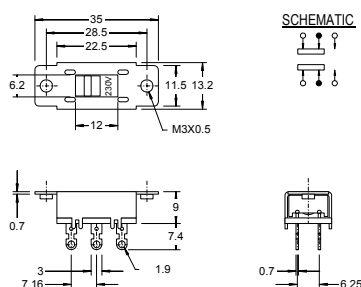
SS-007-022



SPECIFICATION

- Circuit : ON-ON(2P2T)
- Rating : A.C. 125V 6A
- Contact R.[max] : D.C. 5V 1A 30m
- Insulation R.[min]: D.C. 500V 100M
- Withstand VOL. : A.C. 1,000V 1minute
- Operating force : 500 200g
- Life cycle[max] : 10,000 CYCLES

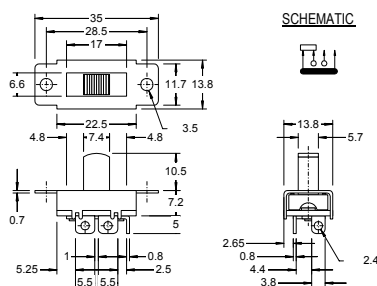
SS-007-022A.SS-007-022B



SPECIFICATION

- Circuit : ON-ON(2P2T)
- Rating : A.C. 125V 6A
- Contact R.[max] : D.C. 5V 1A 30m
- Insulation R.[min]: D.C. 500V 100M
- Withstand VOL. : A.C. 1,000V 1minute
- Operating force : 500 200g
- Life cycle[max] : 10,000 CYCLES

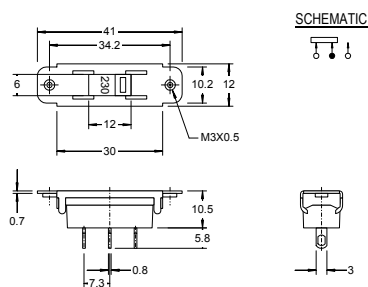
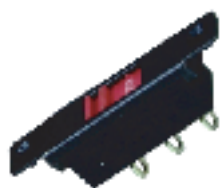
SS-008



SPECIFICATION

- Circuit : ON-ON-ON(1P3T)
- Rating : A.C. 125V 10A
- Contact R.[max] : D.C. 5V 1A 30m
- Insulation R.[min]: D.C. 500V 100M
- Withstand VOL. : A.C. 1,000V 1minute
- Operating force : 400 200g
- Life cycle[max] : 10,000 CYCLES

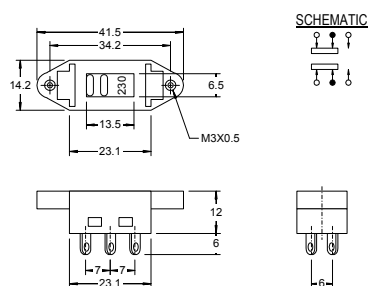
SS-009-22A



SPECIFICATION

- Circuit : ON-ON(1P2T)
- Rating : A.C. 250V 10A
- Contact R.[max] : D.C. 5V 1A 30m
- Insulation R.[min]: D.C. 500V 100M
- Withstand VOL. : A.C. 2,000V 1minute
- Operating force : 400 200g
- Life cycle[max] : 10,000 CYCLES

SS-009-22A1



SPECIFICATION

- Circuit : ON-ON(2P2T)
- Rating : A.C. 250V 10A
- Contact R.[max] : D.C. 5V 1A 30m
- Insulation R.[min]: D.C. 500V 100M
- Withstand VOL. : A.C. 2,000V 1minute
- Operating force : 600 200g
- Life cycle[max] : 10,000 CYCLES