

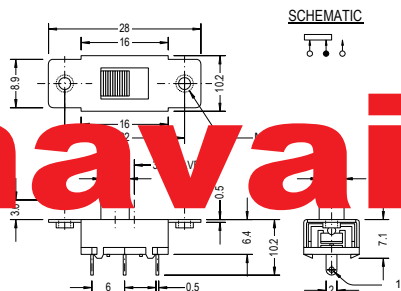


Slide Switch SS Series

SS12F99



# Unavailable



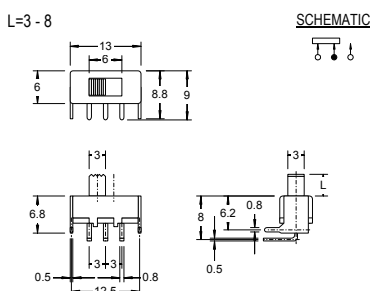
SPECIFICATION

- Circuit : ON-ON ( 1P2T )
- Rating : D.C. 50V 0.5A
- Contact R.[max] : D.C. 5V 1A 30m
- Insulation R.[min] : D.C. 500V 100M
- Withstand VOL. : D.C. 500V 1minute
- Operating force : 300 100g
- Timing : Non Shorting
- Life cycle[max] : 10,000 CYCLES

SS12F124



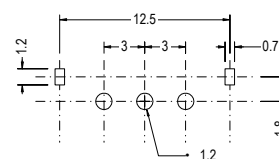
(SS-002B)



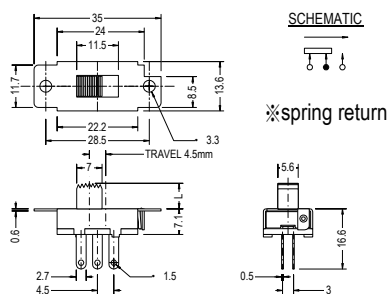
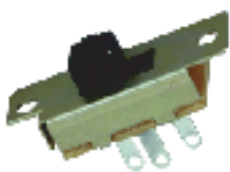
SPECIFICATION

- Circuit : ON-ON(1P2T)
- Rating : D.C. 50V 0.5A
- Timing : Non Shorting

P.C.B. HOLE DETAIL



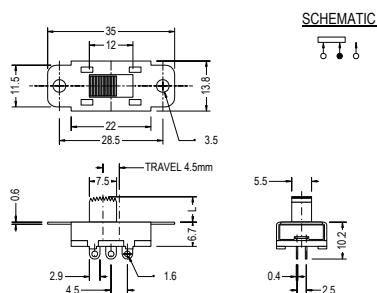
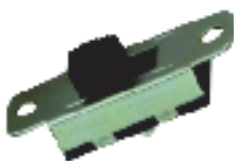
SS12101



SPECIFICATION

- Circuit : ON-ON ( 1P2T )
- Rating : A.C. 250V 1.5A
- Contact R.[max] : D.C. 5V 1A 30m
- Insulation R.[min] : D.C. 500V 100M
- Withstand VOL. : A.C. 500V 1minute
- Operating force : 300 100g
- Timing : Non Shorting
- Life cycle[max] : 10,000 CYCLES

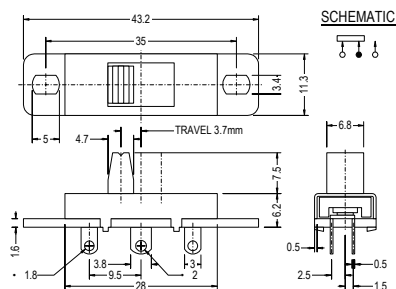
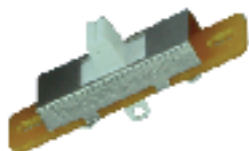
SS12105



SPECIFICATION

- Circuit : ON-ON ( 1P2T )
- Rating : A.C. 250V 1.5A
- Contact R.[max] : D.C. 5V 1A 30m
- Insulation R.[min] : D.C. 500V 100M
- Withstand VOL. : A.C. 500V 1minute
- Operating force : 300 100g
- Timing : Non Shorting
- Life cycle[max] : 10,000 CYCLES

SS143D04



SPECIFICATION

- Circuit : ON-OFF-ON(1P3T)
- Rating : A.C. 250V 1A
- Contact R.[max] : D.C. 5V 1A 30m
- Insulation R.[min] : D.C. 500V 100M
- Withstand VOL. : A.C. 500V 1minute
- Operating force : 300 100g
- Timing : Non Shorting
- Life cycle[max] : 10,000 CYCLES