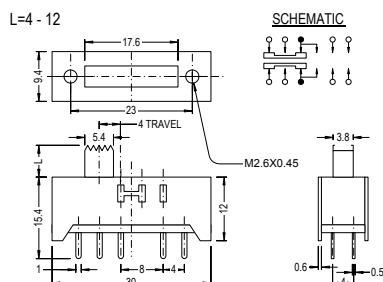


## Slide Switch SS Series

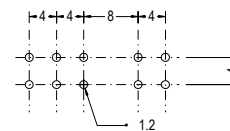
### SS24H03



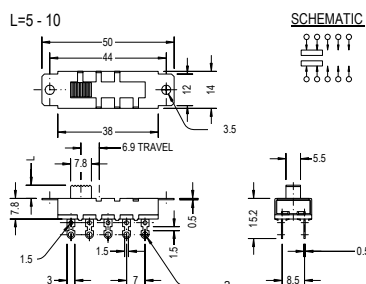
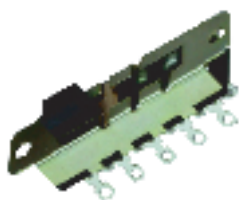
#### SPECIFICATION

- Circuit : ON-ON-ON-ON(2P4T)
- Rating : D.C. 50V 0.3A
- Timing : Shorting

#### P.C.B. HOLE DETAIL



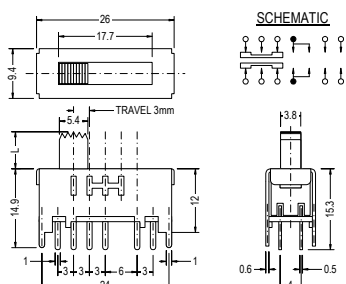
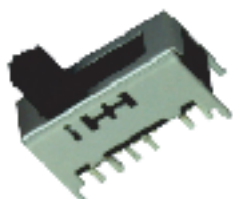
### SS24N01



#### SPECIFICATION

- Circuit : ON-ON-ON-ON(2P4T)
- Rating : A.C. 250V 3A
- Contact R.[max] : D.C. 5V 1A 30m
- Insulation R.[min] : D.C. 500V 100M
- Withstand VOL. : A.C. 500V 1minute
- Operating force : 300 100g
- Timing : Non Shorting
- Life cycle[max] : 10,000 CYCLES

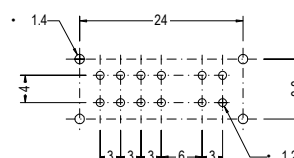
### SS25F02



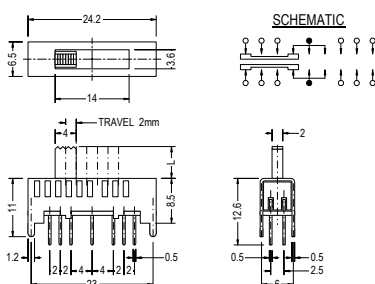
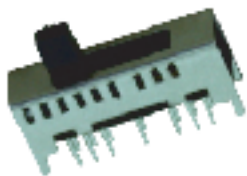
#### SPECIFICATION

- Circuit : ON-ON-ON-ON-ON(2P5T)
- Rating : D.C. 50V 0.3A
- Timing : Shorting

#### P.C.B. HOLE DETAIL



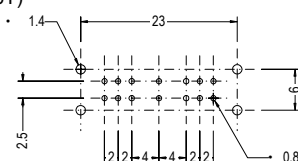
### SS26D02



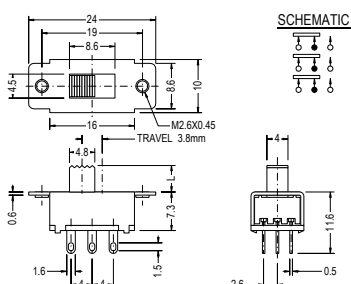
#### SPECIFICATION

- Circuit : ON-ON-ON-ON-ON-ON(2P6T)
- Rating : D.C. 50V 0.3A
- Timing : Shorting

#### P.C.B. HOLE DETAIL



### SS32H01



#### SPECIFICATION

- Circuit : ON-ON(3P2T)
- Rating : D.C. 50V 0.5A
- Contact R.[max] : D.C. 5V 1A 30m
- Insulation R.[min] : D.C. 500V 100M
- Withstand VOL. : A.C. 500V 1minute
- Operating force : 300 100g
- Timing : Non Shorting
- Life cycle[max] : 10,000 CYCLES