



### Thermostat T23 Series



3A-PF2



3A-CF2

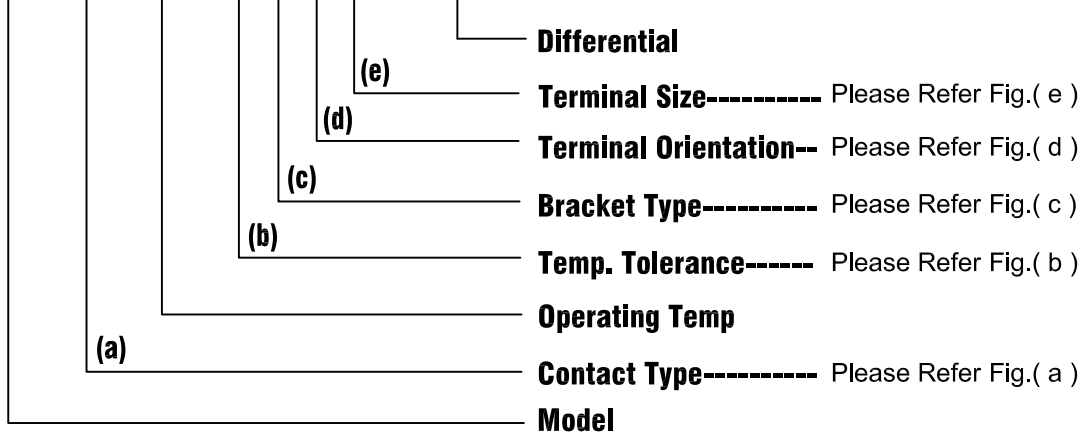
#### SPECIFICATION

- Electrical Rating : 15A 125V AC (Resistive Load)  
10A 250V AC (Resistive Load)  
16A 250V AC (Resistive Load)
- Operating Temp : 50 ~ 175°C (UL.CUL 205°C)
- Differential : 10~30K (15K Standard)
- Temp. Tolerance : Operating Temp.±3K±5K
- Heat Durability : 220°C Max. (PPS)
- Circuit Resistance : 50mΩ Max.
- Insulation Resistance : 100MΩ Min.at DC500V
- Dielectric Strength : AC 1000V for One Minute.  
or AC 1800V for One Second.
- Operating Life : 100000 Cycles (15A 125V/10A 250V AC)  
10000 Cycles (16A 250V AC)
- Weight:4.6g max.

#### HOW TO ORDER

##### MODEL CODE (FULL CODE)

**T23 A 1 1 0 B C F 2 - 1 5**



#### (a) CONTACT TYPE :

A = Contact Opens When Temperature Rises to Set Point (Normally Closed)



B = Contact Closes When Temperature Rises to Set Point (Normally Open)



M = Manual Reset

#### (b) TEMP. TOLERANCE : (\*=STANDARD)

Grade	A	*B
Action ± °C	3	5
Reset ± °C	4	8

• The Grade of Temp. Tolerance is "A", When The Operating Temp. is Less Than 105°C.

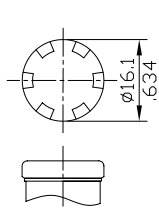
• The Grade of Temp. Tolerance is "B", When The Operating Temp. is Over 106°C.



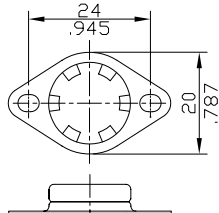
(c) BRACKET TYPE :

● FIXED BRACKET

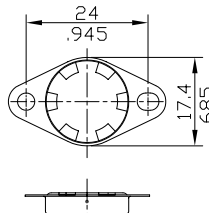
\* STAINLESS STEEL CAP : D TYPE



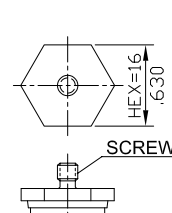
C TYPE



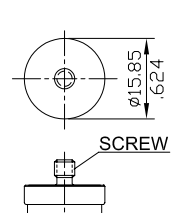
B TYPE



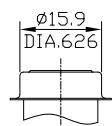
X TYPE



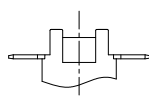
H TYPE



R TYPE



\* D TYPE



P TYPE  
(4 POSTS SHELL)

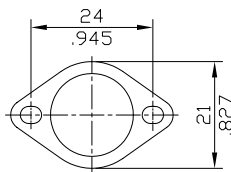
SCREW TYPE : M4x0.7 L:6mm (STD)  
M5x0.8 L:6mm (STD)  
#6-32UNC  
#8-32UNC

One Shot is suitable for all shapes above.

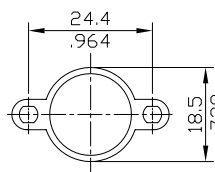
mm  
inch

● LOOSE BRACKET

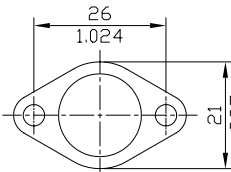
\* STAINLESS STEEL CAP : U TYPE



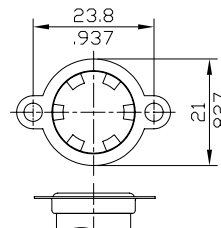
O TYPE



\* U TYPE

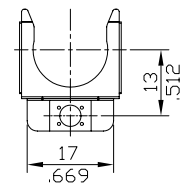


M TYPE



S TYPE

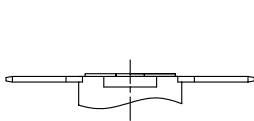
(ONE WING)



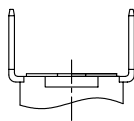
G TYPE  
(Screw or Spot Available)

mm  
inch

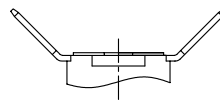
(d) TERMINAL ORIENTATION:



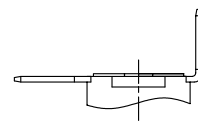
F TYPE  
(0°)



R TYPE  
(90°)

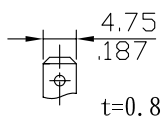


T TYPE  
(45°)



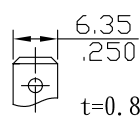
L TYPE  
(90°X1)

(e) TERMINAL SIZE:



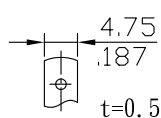
TYPE 1

Amp #187 TAB



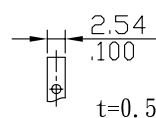
TYPE 2

Amp #250 TAB



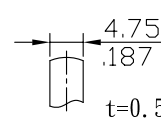
TYPE 3

SOLDER TAB



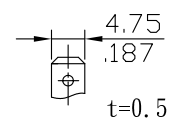
TYPE 4

DIP TAB



TYPE 6

WELD TAB



TYPE 7

Amp #187 TAB

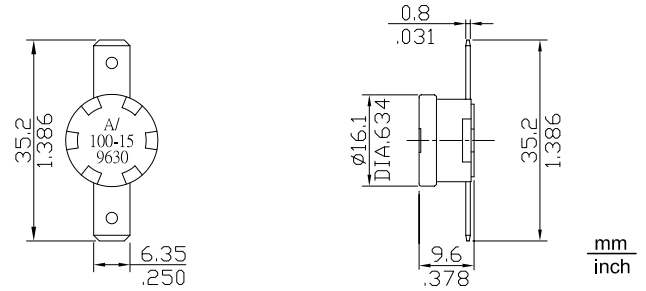
mm  
inch



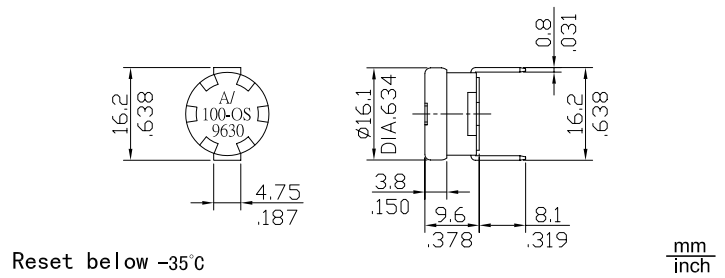
### Thermostat T23 Series



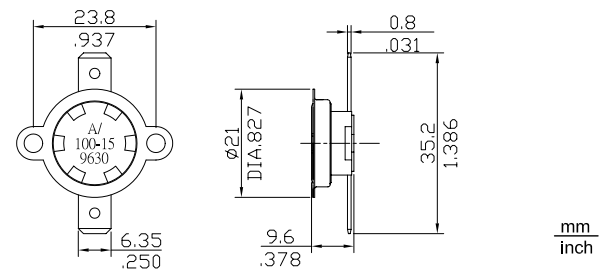
#### 3A-CF2



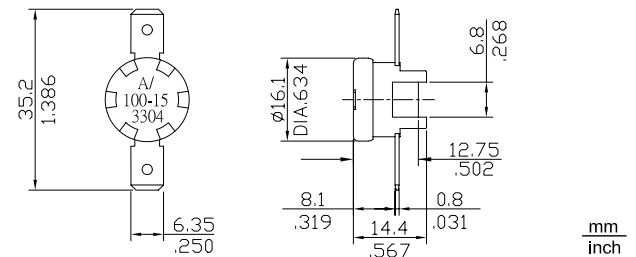
#### 3A-CR1-OS(ONE SHOT)



#### 3A-SF2(LOOSE BRACKET)



#### 3A-PF2(4-POST)



#### 3A-XF2(FIX BRACKET)

