



SPECIFICATIONS

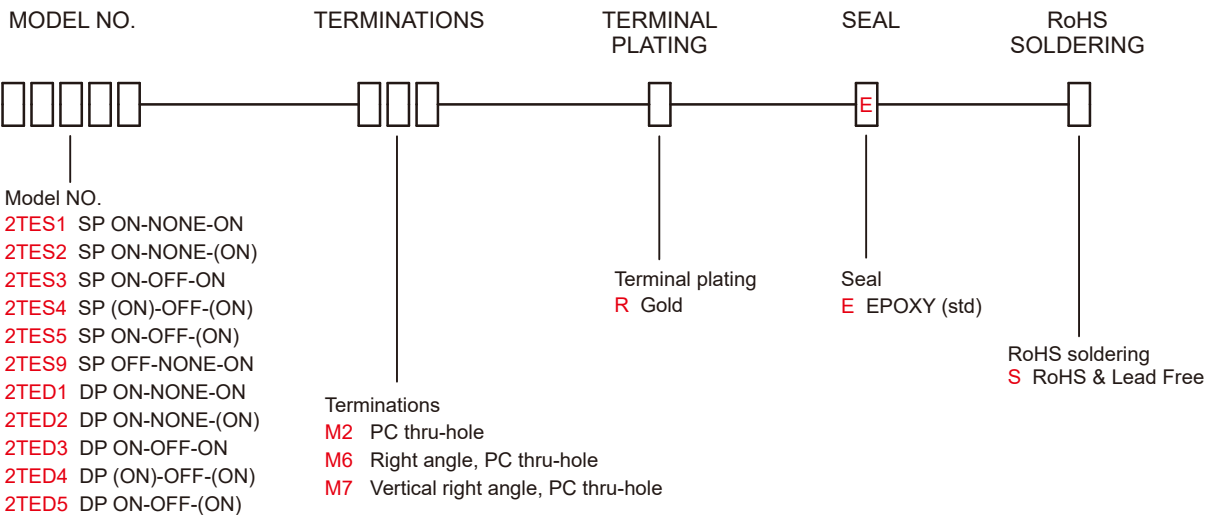
- CONTACT RATING:** Max 0.4 VA max @ 48 VAC or DC
- MECHANICAL LIFE:** minimum 40,000 operations.
- CONTACT RESISTANCE:** 50 mΩ max.
- INSULATION RESISTANCE:** 1,000 MΩ min.
- DIELECTRIC STRENGTH:** 500 Vrms min.@sea level.
- OPERATING TEMPERATURE:** -20°C to 85°C.
- DEGREE OF PROTECTION:** IP67

MATERIALS

- ACTUATOR:** Brass,chrome plated,internal O-ring seal.
Standard for all actuators.
- BUSHING & HOUSING:** SPCC
- CASE:** Glass filled nylon 6/6, flame retardant,heat stabilized (UL94v-0)
- SWITCH SUPPORT:** Brass,tin plated.
- CONTACT:** Phosphor bronze gold - plated over nickel barrier.
- TERMINALS:** Brass,gold plated.
- TERMINAL SEAL:** Epoxy



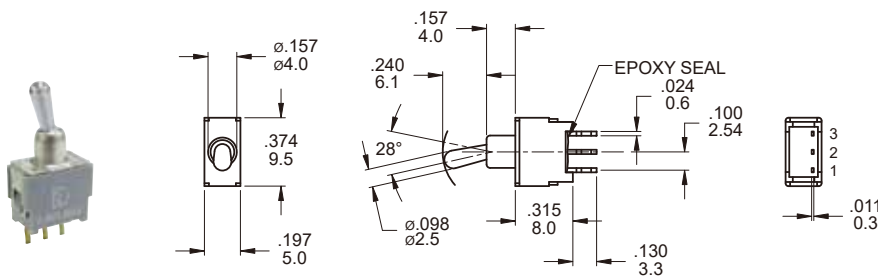
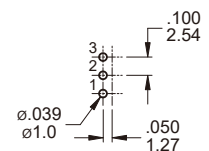
HOW TO ORDER



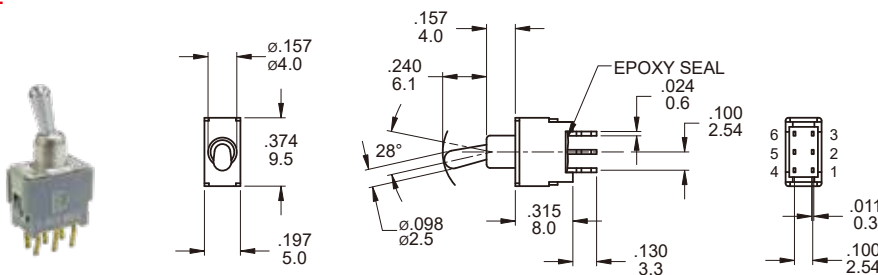
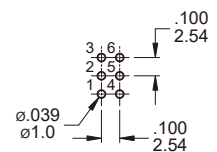
SWITCH FUNCTION

NO. POLES	MODEL NO.	SWITCH FUNCTION			CONNECTED TERMINALS / SCHEMATIC		
		POS.1	POS.2	POS.3	POS.1	POS.2	POS.3
SP	2TES1	ON	NONE	ON	2-3 	N/A	2-1
	2TES2	ON	NONE	(ON)		OPEN	
	2TES3	ON	OFF	ON			
	2TES4	(ON)	OFF	(ON)	OPEN	N/A	2-1
	2TES5	ON	OFF	(ON)	OPEN	N/A	2-1
	2TES9	OFF	NONE	ON			
DP	2TED1	ON	NONE	ON	2-3,5-6 	N/A	2-1,5-4
	2TED2	ON	NONE	(ON)		OPEN	
	2TED3	ON	OFF	ON			
	2TED4	(ON)	OFF	(ON)	OPEN	N/A	2-1,5-4
	2TED5	ON	OFF	(ON)	OPEN	N/A	2-1,5-4

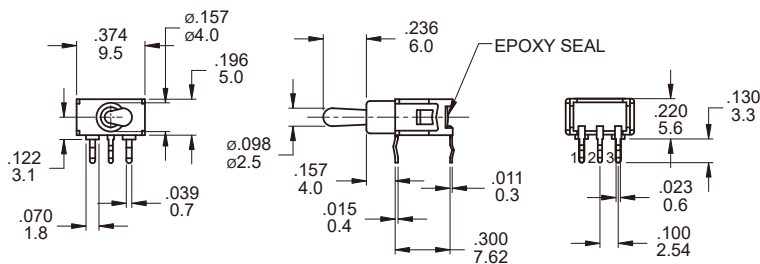
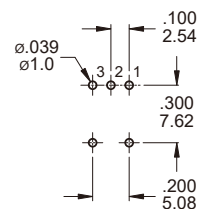
()=MOMENTARY

POLE OPTIONS
M2

P.C. MOUNTING

SPDT

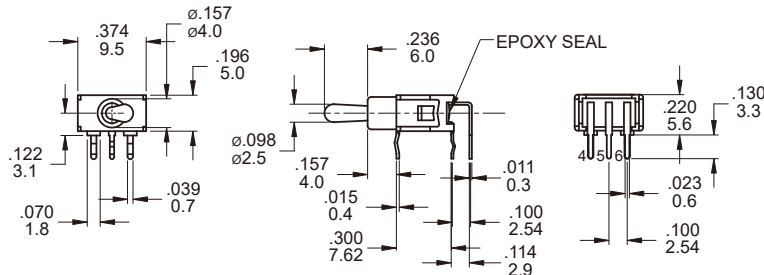
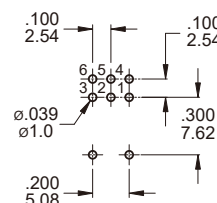
Part No. Shown : 2TES1M2RES

M2

P.C. MOUNTING

DPDT

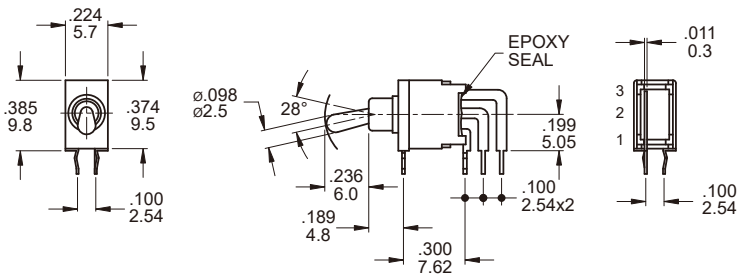
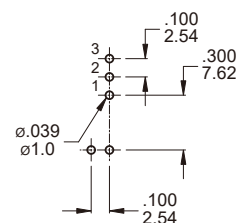
Part No. Shown : 2TED1M2RES

M6

P.C. MOUNTING

SPDT

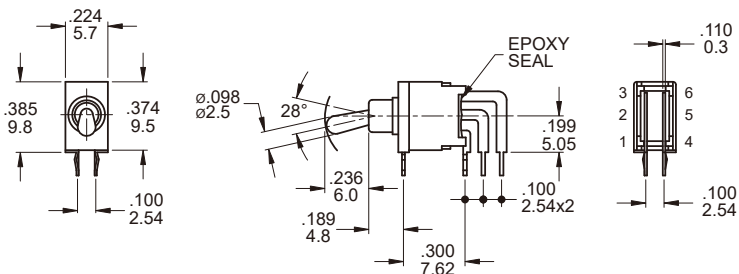
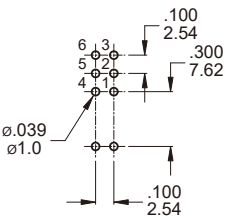
Part No. Shown : 2TES1M6RES

M6

P.C. MOUNTING

DPDT

Part No. Shown : 2TED1M6RES

M7

P.C. MOUNTING

SPDT

Part No. Shown : 2TES1M7RES

M7

P.C. MOUNTING

DPDT

Part No. Shown : 2TED1M7RES

SOLDERING PROCESSES
WAVE SOLDERING: Recommended Soldering Temperature: 260 ± 5°C

Duration of Solder Immersion: Max 5 sec.(PCB is 1.6mm in thickness)